

**WALL TYPES**

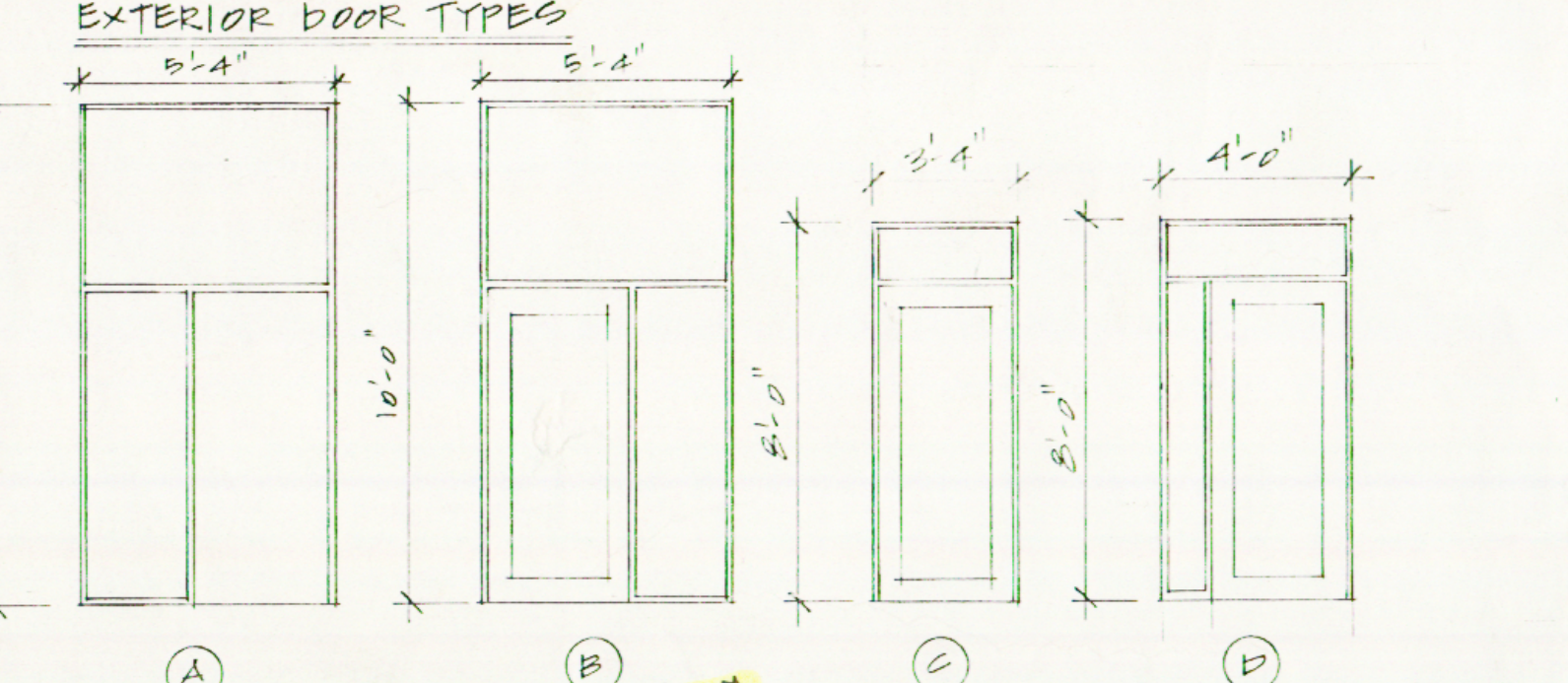
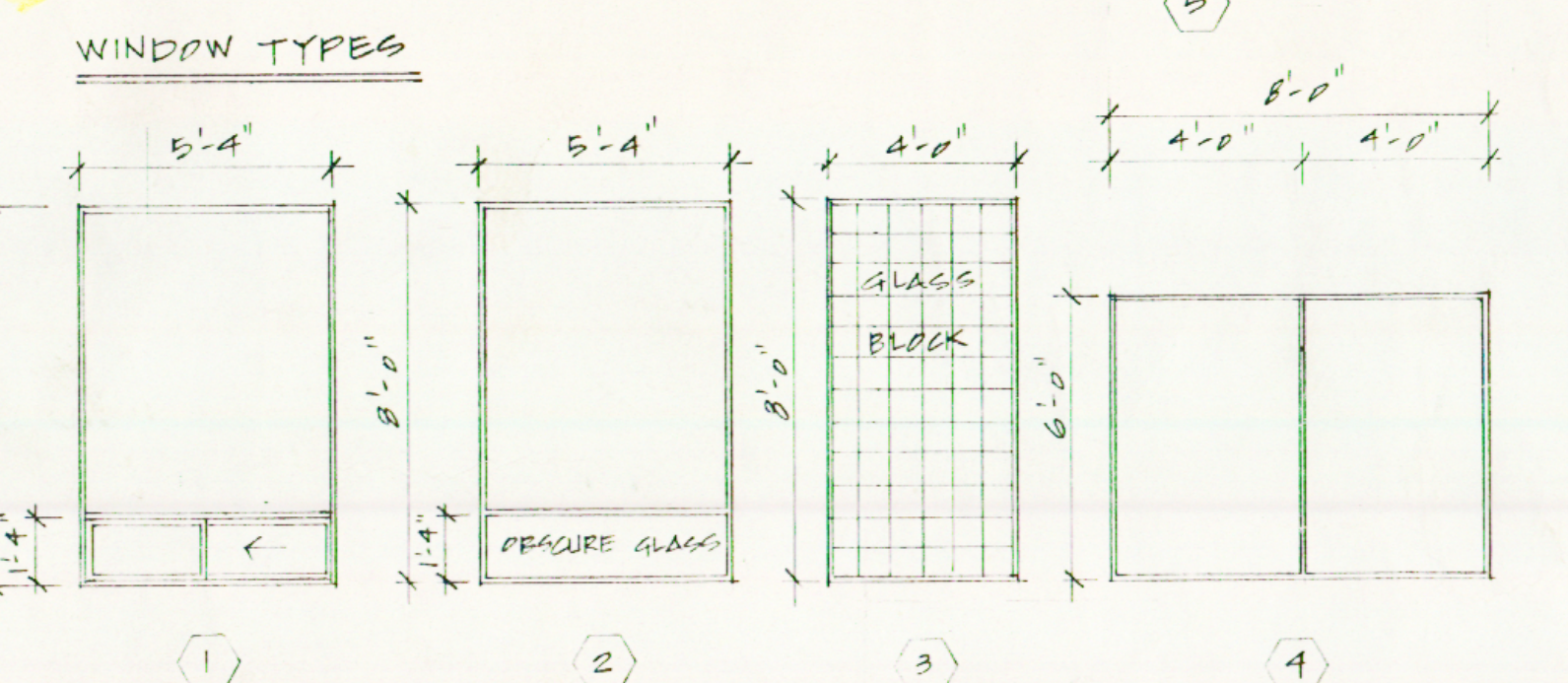
▲ SOUNDPROOF DOUBLE WALL - 1 HR. F.R.  
 5/8" TYPE 'X' G.W.B.  
 1/2" RES. BAR  
 3/8" MET. STUDS  
 1/2" G.W.B. → R12 INSULATION  
 3/4" SPACING  
 1/2" G.W.B. → DONNER COMMON  
 3/8" MET. STUDS  
 1/2" RES. BAR  
 5/8" TYPE 'X' G.W.B.  
 ACOUSTIC SEALANT @ ALL ELEC. BOXES  
 @ 2' G.W. HT.

▲ SOUNDPROOF DOUBLE WALL - 2 HR. F.R.  
 SAME AS ▲ BUT WITH  
 5/8" TYPE 'X' G.W.B. INSTALLED STAGGERED

--- INDICATES FUTURE WALLS, DOORS, & FIXTURES

▲ OFFSET WALL - 1 HR. F.R.  
 5/8" TYPE 'X' G.W.B.  
 3/8" MET. STUDS STAGGERED  
 W/ 1/2" TOP & BOT. PLATES  
 5/8" TYPE 'X' G.W.B.

▲ 1 HR. F.R. WALL  
 5/8" TYPE 'X' G.W.B. BOTH SIDES  
 3/8" MET. STUDS



Commercial storefront  
 Black metal frame  
 flashing under windows  
 Double glazed

**COMMERCIAL BUILDING RENOVATION**

980 ALDER ST.  
 CAMPBELL RIVER BC

**FLOOR PLAN**

ARIZAN  
 DESIGN + DRAFTING  
 COURTENAY BC 338-9823

DATE: MAY 100  
 SCALE: 1/8" = 1'-0"  
 DRAWN BY: K. KAPTEIN

DWG. 2 OF 3



May 31/00  
 Structural only