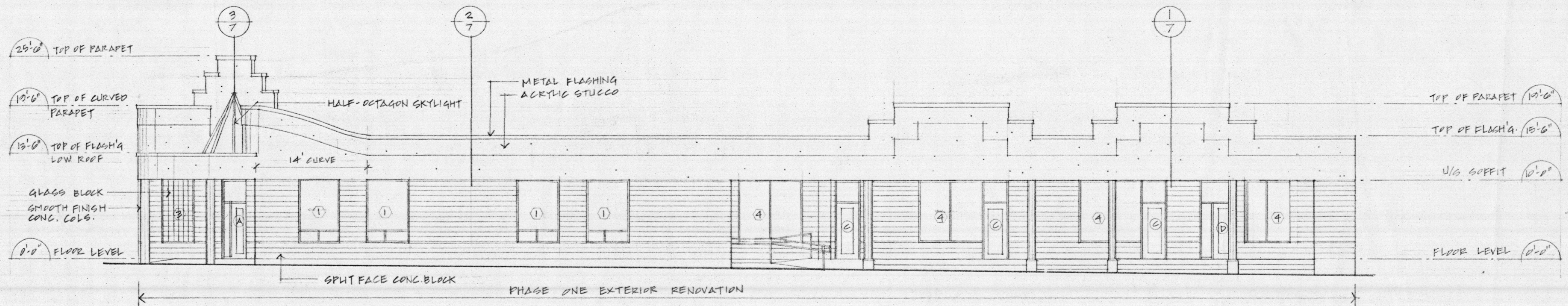


1 WALL SECTION
7 3/4" = 1'-0"

2 WALL SECTION
7 3/4" = 1'-0"

3 SECTION THROUGH ENTRANCE
7 3/4" = 1'-0"



NORTH ELEVATION
1/8" = 1'-0"

COMMERCIAL BUILDING RENOVATION
980 ALDER ST. CAMPBELL RIVER BC
PHASE ONE NORTH ELEVATION SECTIONS
ARIZAN DESIGN + DRAFTING COURTENAY BC 338-9823
DATE: MAY /00
SCALE: AS NOTED
DRAWN BY: K. KAPTEIN
DWG. 7 OF 9