

BM 1095 WHITE
 GC 6.5
 KC 6.5
 TC 1Y16

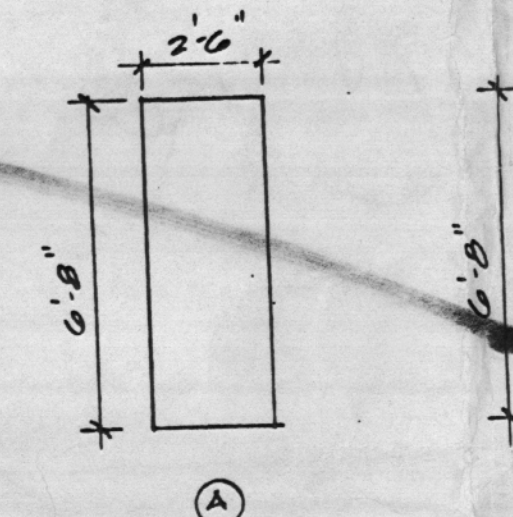
BM 977 WHITE
 GC 18
 KC 1Y13
 TC 2Y40

BM 1540
 AC 2Y29 RC 58.5
 LC 3Y3 TC 3Y13

WALL TYPES

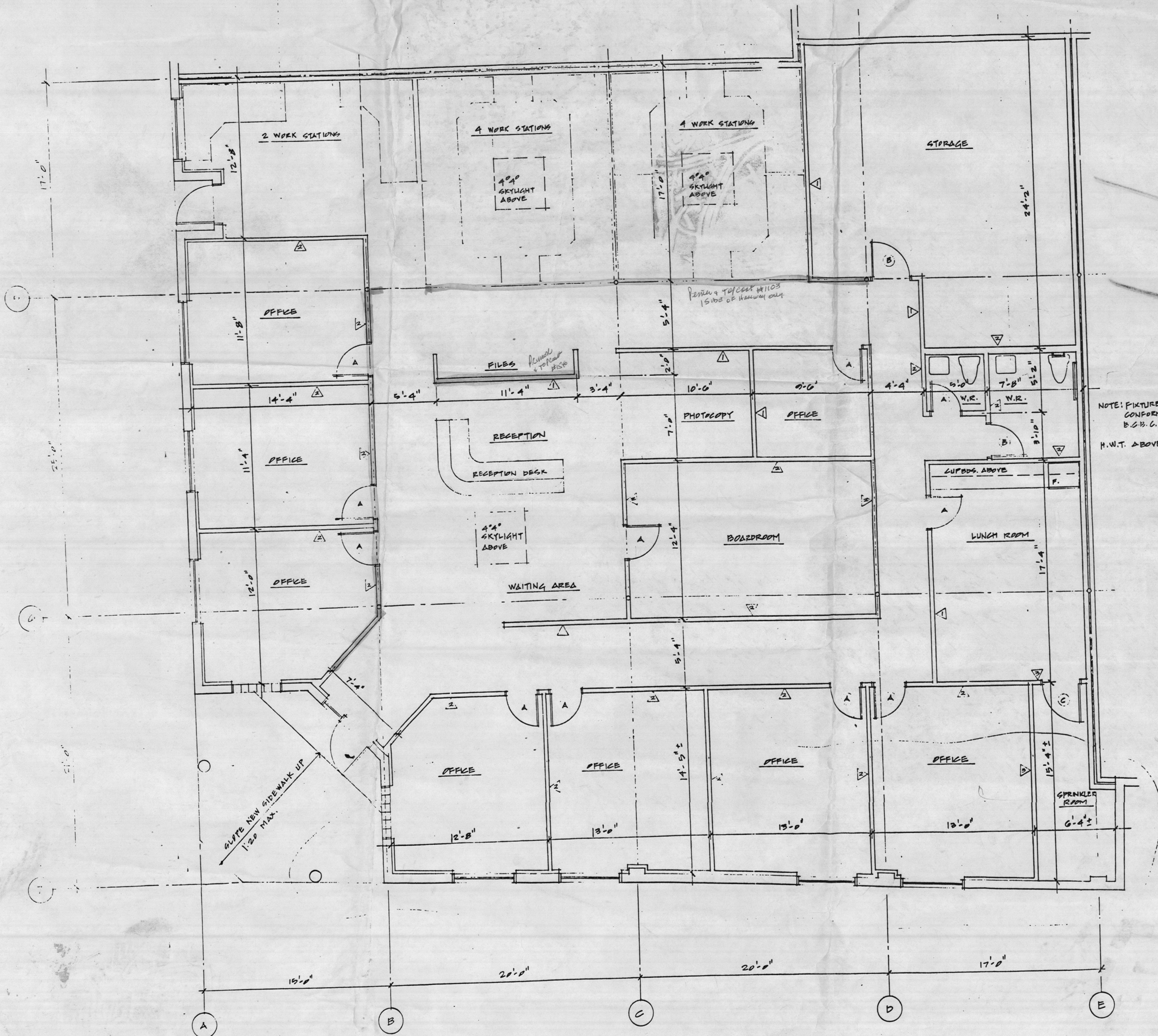
- △ 1/2" G.W.B. BOTH SIDES
 3/8" MET. STUDS @ 1'
- △ 1/2" G.W.B. BOTH SIDES
 2 1/2" SOUND INSUL.
 3/8" MET. STUDS @ 1'
 ACOUSTIC SEALANT @
 4 @ CLG.
- △ 5/8" TYPE 'X' G.W.B. @
 TO U/S ROOF JOISTS
 3/8" MET. STUDS @ 1'

INTERIOR DOOR TYPES



NOTE: FIXTURES TO
 CONFORM TO
 B.C.B.C. SEC 3.7.4.5
 H.W.T. ABOVE W.R.

RECEPTION
 OVER
 Colour for
 Chan



- BM-1103
- Office → BM-977
- BM-1540
- BM 1095 TRIM

△ JULY 17/2000 GENERAL REVISIONS

COMMERCIAL BUILDING RENOVATION
980 ALDER ST. CAMPBELL RIVER BC
OFFICE PLAN
ARQIZAN DESIGN + DRAFTING COURTENAY BC 338-9823
DATE: MAY 100 SCALE: 1/4" = 1'-0" DRAWN BY: K. KAPTEIN
BWG. 4 OF 9