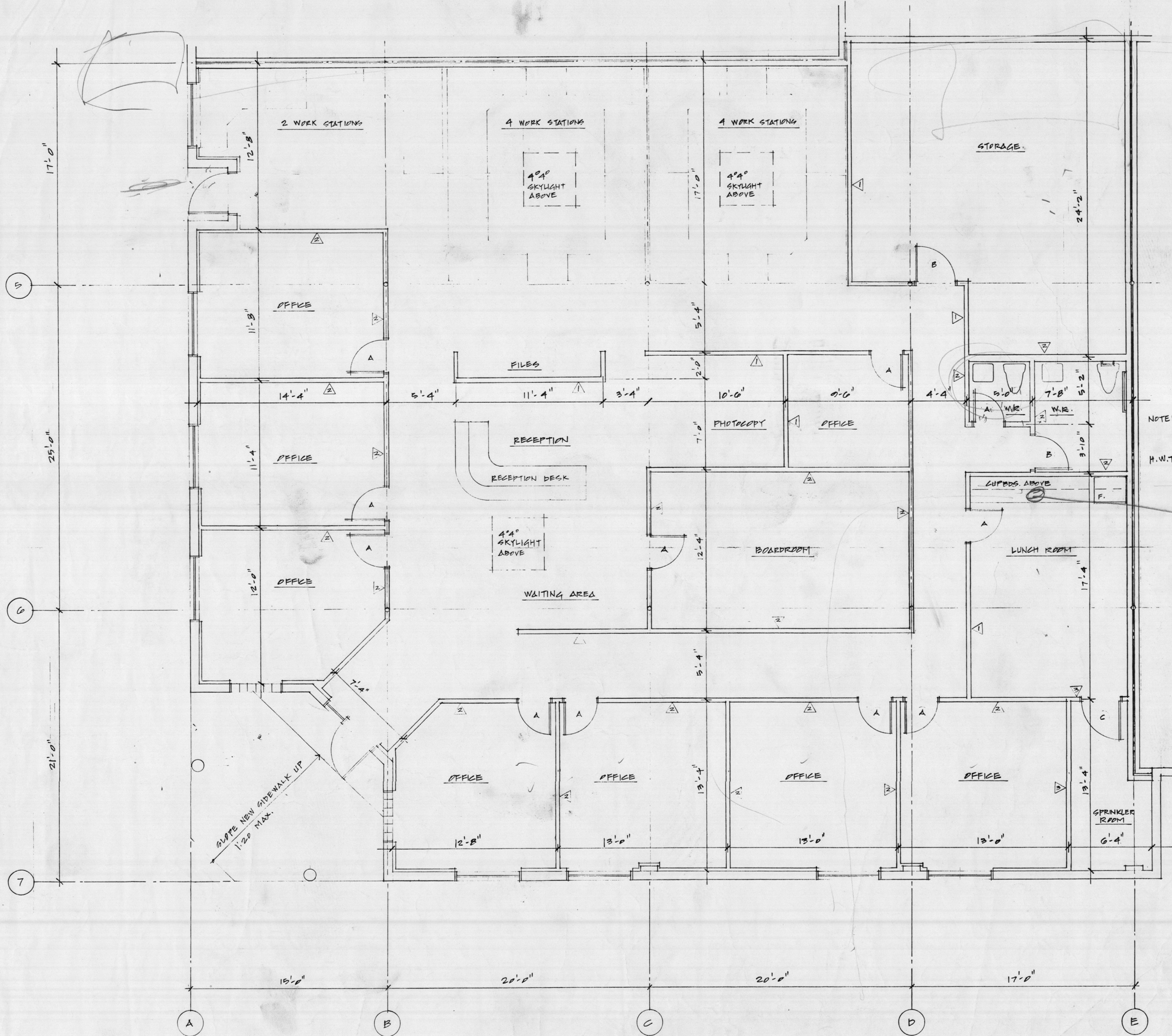


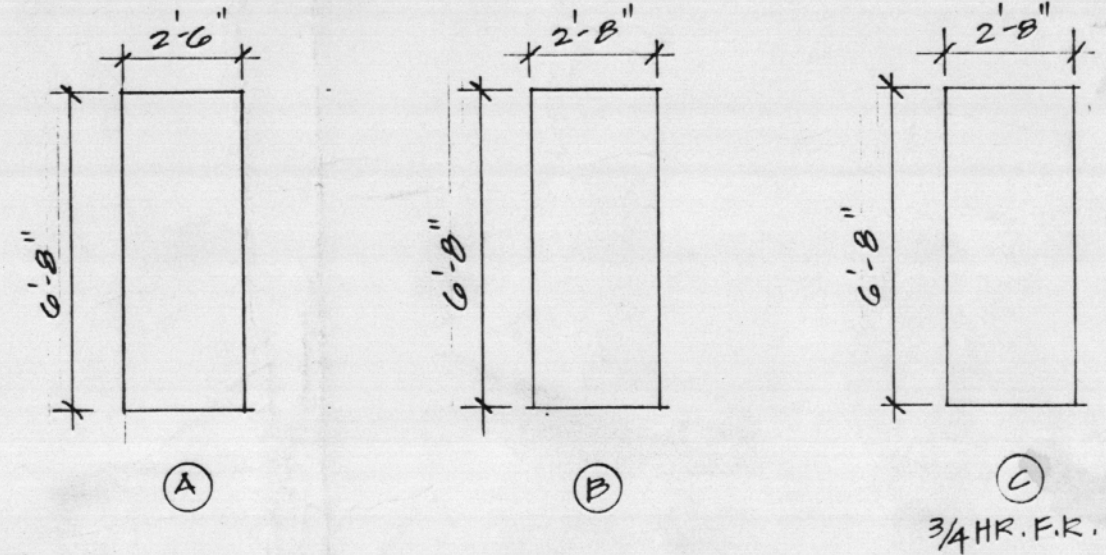
27'3" skylight  
44'9" - 35



**WALL TYPES**

- ▲ 1/2" G.W.B. BOTH SIDES TO CEILING  
3 3/8" MET. STUDS @ 16" O.C. (yes, with 1/2" dry wall cause it warps)
- ▲ 1/2" G.W.B. BOTH SIDES TO U/S ROOF JOISTS  
2 1/2" SOUND INSUL.  
3 3/8" MET. STUDS @ 16" O.C.  
ACOUSTIC SEALANT @ ALL ELEC. BOXES  
4 @ CL's.
- ▲ 5/8" TYPE 'X' G.W.B. BOTH SIDES TO U/S ROOF JOISTS  
3 3/8" MET. STUDS @ 16" O.C.

**INTERIOR DOOR TYPES**



NOTE: FIXTURES TO CONFORM TO B.C.B.C. SEC 3.7.4.B  
H.W.T. ABOVE W.R.

2/10  
Doors

SINK

<p>COMMERCIAL BUILDING RENOVATION</p> <p>380 ALDER ST. CAMPBELL RIVER BC</p>
<p>OFFICE PLAN</p>
<p>ARRIZAN DESIGN + DRAFTING COURTENAY BC 338.9823</p>
<p>DATE: MAY 100 SCALE: 1/4" = 1'-0" DRAWN BY: K. KAPTEIN</p>
<p>BWG. 4 OF 9</p>