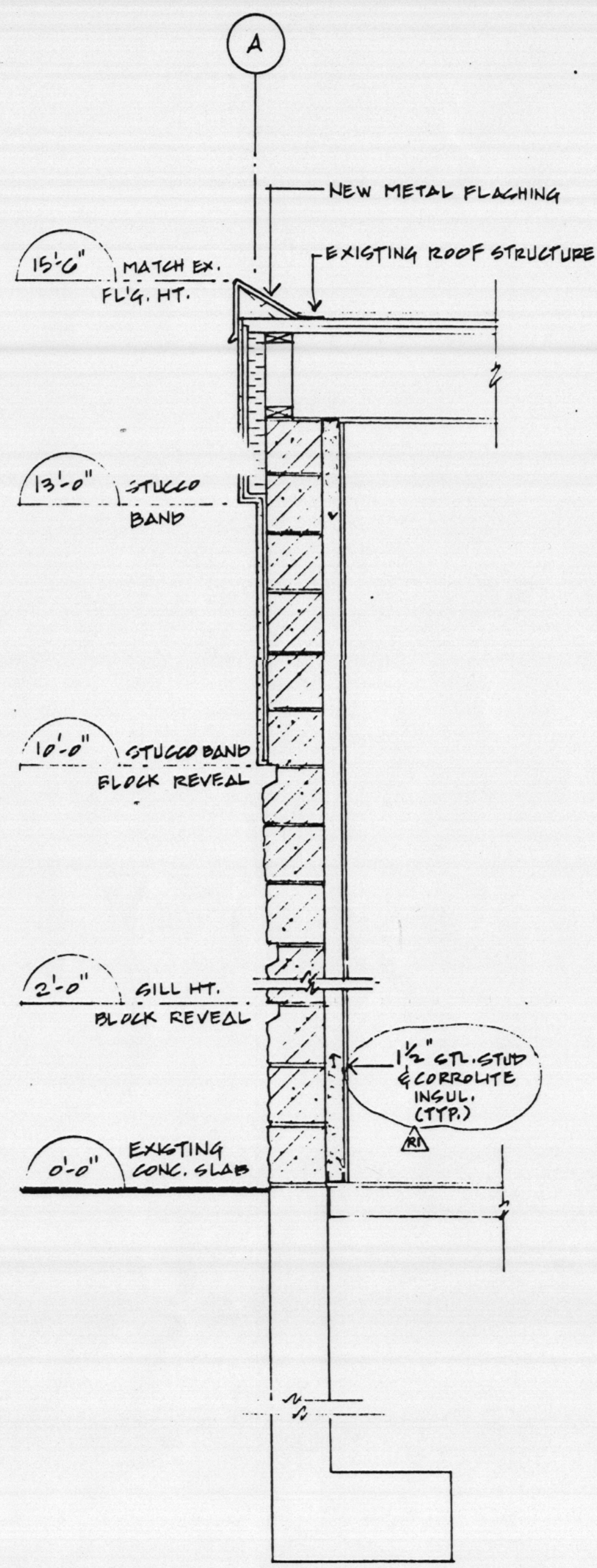
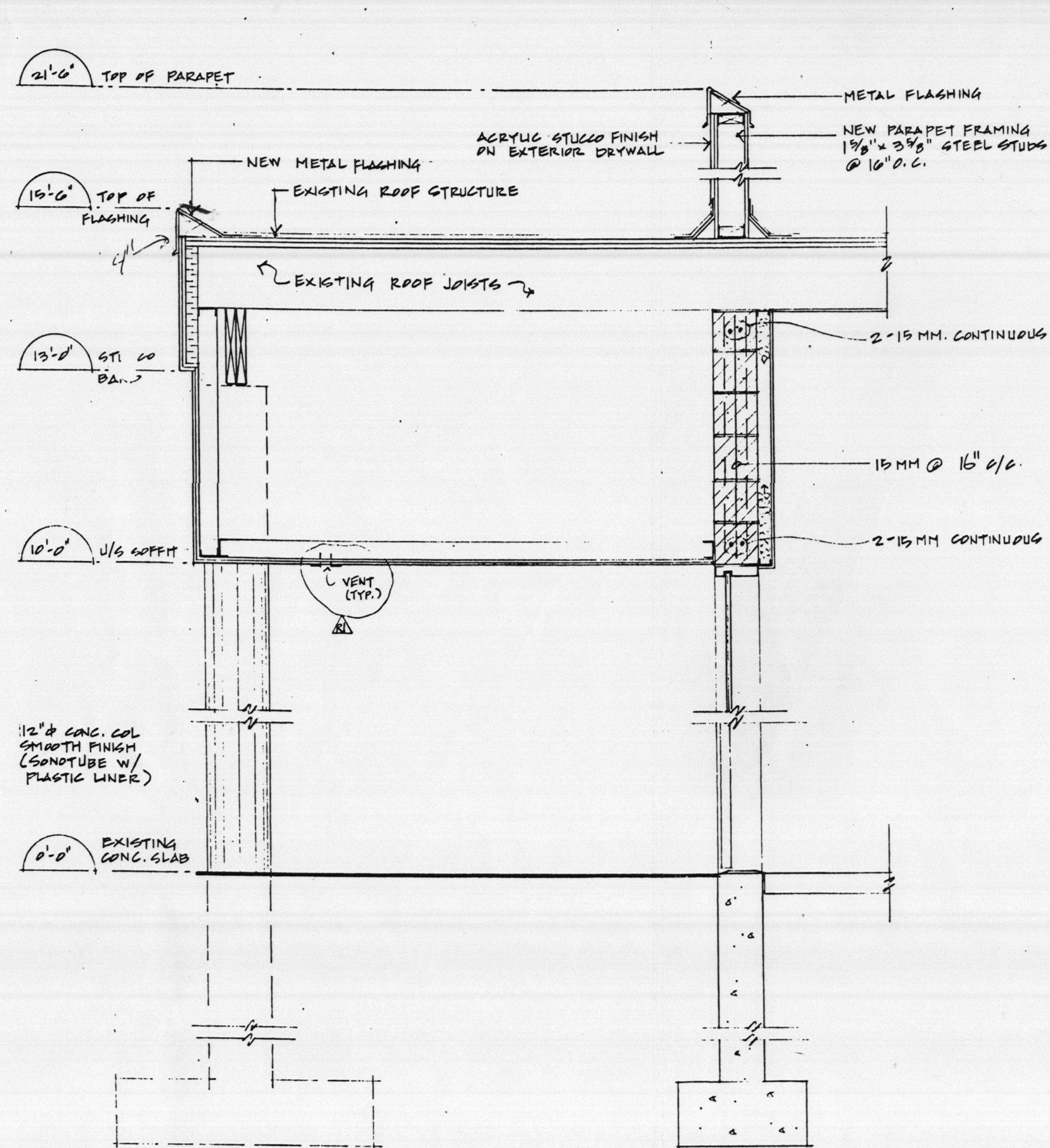


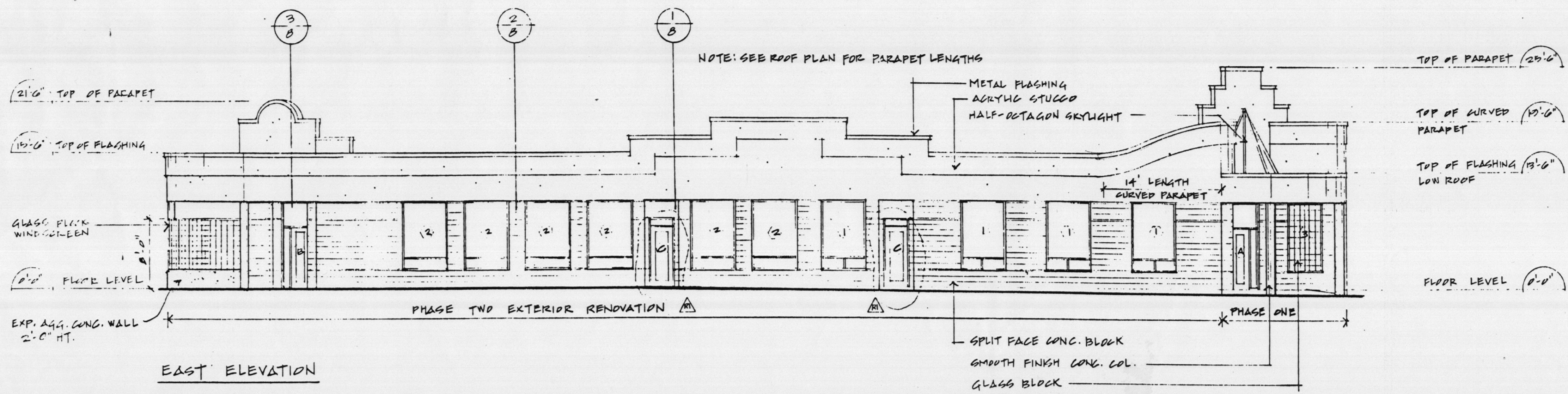
1 WALL SECTION
3/4" = 1'-0"



2 WALL SECTION
3/4" = 1'-0"



3 SECTION THROUGH ENTRANCE
3/4" = 1'-0"



EAST ELEVATION
1/8" = 1'-0"

NOTE: SEE DWG. 2 FOR EXTERIOR DOOR & WINDOW TYPES

JULY 17/2000 GENERAL REVISIONS

COMMERCIAL BUILDING RENOVATION

980 ALDER ST. CAMPBELL RIVER BC

PHASE TWO EAST ELEVATION SECTIONS

ARIZAN DESIGN + DRAFTING COURTENAY BC 338-0823

DATE: MAY 100
SCALE: AS NOTED
DRAWN BY: K. KAPTEIN

DWG. 8 OF 9