

FOUNDATION PLAN
SCALE 1/8" = 1'-0"

151' x 130'
19,630
450
20,080 lbs

65

Oct 5th 1972

REVISIONS

NEW STORE FOR
OVERWAITEA LTD
CAMPBELL RIVER,
B.C.

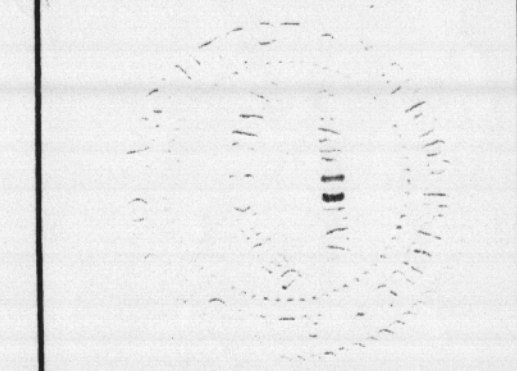
DEREK S. MANN
D. ARCH. M.P.A.I.C.
ARCHITECT
295 PEMBERTON AVE.
NORTH VANCOUVER, B.C.
V8B-1Z32

FOUNDATION PLAN

SCALE 1/8" = 1'-0"

DATE SEPT 12th 1972

DRWN G.B. CHD. *[Signature]*



SHEET
OF 5 **2**

980 Alder