

EXISTING ROOF ASSEMBLY
 - MEMBRANE ROOFING OVER
 - RIGID INSULATION ON
 - PLYWOOD SHEATHING ON
 - 2x12 JOISTS @ 16" OC

NOTE - EXHAUST FAN NOT SHOWN

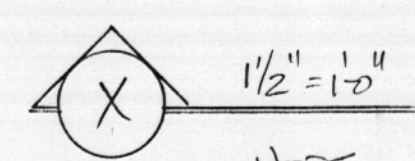
COLLECTION DETAIL TO COME
 PRE-MANUFACTURED GALV. STEEL VERTICAL DISCHARGE EXHAUST FAN SUPPORT CURB (FOR HINGED FAN INSTALLATION)

2- 2x10 PRESSURE TREATED (HEAVY F.P.) ROOF CURB 9/16 CURB FLASHING (MAINTAIN 40" x 40" R/O)

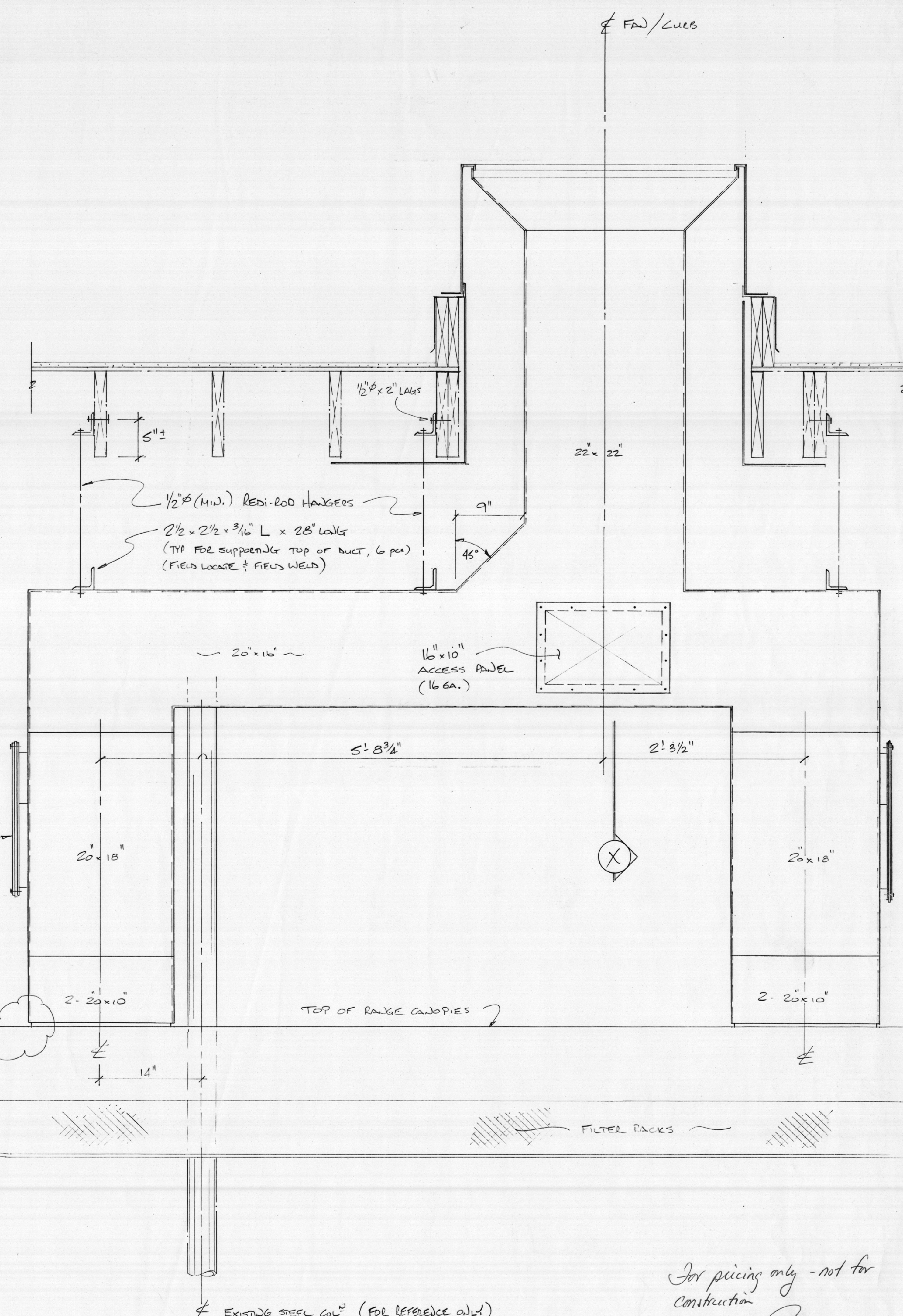
PROTECT COMBUSTIBLE ELEMENTS OF THRU-ROOF OPENING FOR EXHAUST DUCT WITH 26 GA METAL SPACED 1" AWAY FROM COMBUSTIBLE ELEMENTS WITH NON-COMBUSTIBLE SPACERS.

ASIA GARDENS RANGE CANOPY

BEST WOK RANGE CANOPY



NOTE: DUCT SIZES SHOWN ARE INTERNAL DIMENSIONS
 DUCTS SHALL BE CONSTRUCTED FROM 16 GA. BLACK SHEET METAL



16" x 10" ACCESS PANEL (TOP 3 PLACES) 9/16 1500°F GASKET

DETAIL "Z" DWG NO. 2

EXISTING STEEL COL. (FOR REFERENCE ONLY)

ELEVATION 1/2" = 1'0"

For pricing only - not for construction
 Dec 1/00
 [Signature]
 1/2